

Cameron



Field Heath Road, Uxbridge, UB8 3NR

- Two bedroom Semi Detached home
- Unfurnished
- Extended to the rear
- Double bedrooms
- Downstair wc
- Off street parking
- Available now
- Large private rear garden
- Utility room
- EPC Rating- C

£1,900 PCM



Cameron Estate Agents
195 High Street,
Middlesex, Uxbridge, UB8 1LB
E: uxbridge@cameron.co
T: 01895252000
www.cameron.co

Whilst every care has been taken to ensure the accuracy of these particulars, none of the statements contained herein are to be relied upon as representations of fact. These particulars do not constitute an offer or contract.

Description

A charming and rare two bedroom extended semi detached family home presented to the Lettings market for the first time. This beautiful home offers a large modern kitchen that has been extended to the rear leading out onto a stunning large landscaped private garden. A through lounge and downstairs wc and a converted utility room further occupy the ground floor. Upstairs presents two double bedrooms with fitted wardrobes and a luxury modern bathroom. Located on a popular tree lined road, close to Hillingdon Hospital and Brunel University and within easy reach of Uxbridge Town Centre. Gas Central Heating and off street parking. Presented unfurnished and available NOW and must be seen. Would suit a small family.

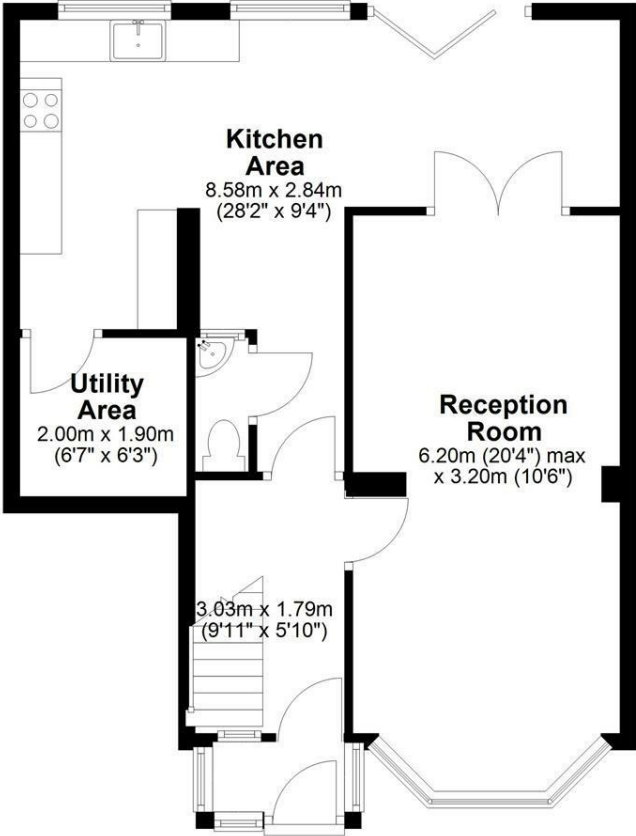
IMPORTANT NOTICE

These particulars have been prepared upon information supplied by the Vendor and should be verified by your surveyors and solicitors. In accordance with the Property Misdescriptions Act 1991 we have prepared these sales particulars as a general guide to give a broad description of the property. They are not intended to constitute part of an offer or contract. We have not carried out a structural survey and the services, appliances and specific fittings have not been tested. All photographs, measurements, floor plans and distances referred to are given as a guide only and should not be relied upon for the purchase of carpets or any other fixtures or fittings. Lease details service charge and ground rent (where applicable) are given as a guide only and should be checked and confirmed by your solicitor prior to exchange of contract



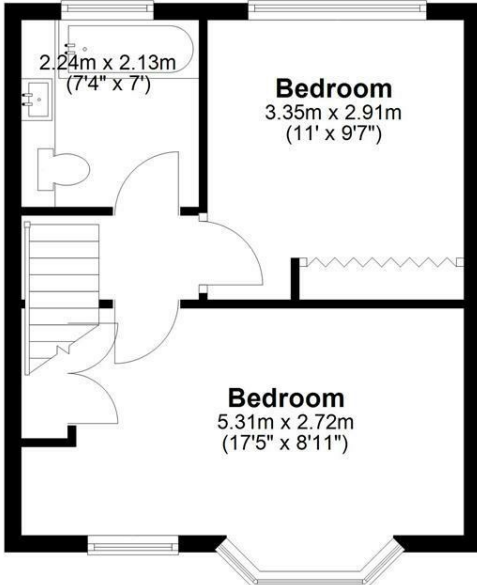
Ground Floor

Approx. 69.5 sq. metres (748.3 sq. feet)



First Floor

Approx. 32.4 sq. metres (349.1 sq. feet)



Total area: approx. 102.0 sq. metres (1097.5 sq. feet)

Cameron



Whilst every care has been taken to ensure the accuracy of these particulars, none of the statements contained herein are to be relied upon as representations of fact. These particulars do not constitute an offer or contract.